

VENARA

GÜNEŞLİ

“Living is beautiful”

Living is beautiful...

Venara adds comfort and privileges to your new life in the Venara Güneşli project, as in all projects realized with the motto "It is good to live".

Living is beautiful...

VENARA

GÜNEŞLİ

“Living is beautiful”

ABOUT US

Inaş Yapı and Conoğlu Group of Companies, which have successfully made a name for themselves in the sector with their housing and contracting projects, are joining forces in the Venara Güneşli project. Inaş Yapı, which continues to realize Venara projects in unique locations, continues its investments with the power and experience gained from Özen Group-Onur Markets, one of the strongest companies in the retail sector.

VENARA

GÜNEŞLİ

"Living is beautiful"



Location, location, location...

Venara Güneşli is rising at the intersection of main roads in a central and valuable location of Istanbul. Venara Güneşli consists of 211 apartments and 12 commercial units in 2 blocks. It appeals to different needs with 1+1, 2+1 and 3+1 apartment options.



Experience the advantages of location

You have a gateway to a valuable investment in the heart of Basin Ekspres, next to Trade and Fair Centers, Shopping Centers, Universities, Hotels, Hospitals and Metro. At the center of the transportation network...



VENARA
GÜNEŞLİ

| | | | | | | | |
|----------------------------------------------------------------------------------------------------------------------------|--------------------------------------------------------------------------------------------------------------------------|-----------------------------------------------------------------------------------------------------------------------------|-------------------------------------------------------------------------------------------------------------------------|-------------------------------------------------------------------------------------------------------------------|--------------------------------------------------------------------------------------------------------------------|-----------------------------------------------------------------------------------------------------------------------|--------------------------------------------------------------------------------------------------------------------------------|
|  MİMAR SİNAN METRO STATION (50m) |  ATAKÖY MARMARAY STATION (10km) |  YENİBOSNA METROBUS STATION (7km) |  ATAKÖY AIRPORT (6,5km) |  İSTANBUL AIRPORT (36km) |  HILTON GARDEN (400m) |  RADISSON HOTEL (3km) |  PULLMAN HOTEL (3,5km) |
|  AQUA FLORYA SHOPPING MALL (10km) |  MALL OF İSTANBUL (6,5km) |  STARCITY MALL (2km) |  212 SHOPPING MALL (4km) |  FORUM İSTANBUL (15km) |  İSTOÇ (8,2km) |  MASKO (7km) |  JEWELLERY CITY (4km) |
|  WORLD TRADE CENTER (7km) |  İSTANBUL FAIR CENTER (7km) |  BAĞÇELİEVLER MEDICAL PARK (6,8km) |  BAĞÇELİEVLER MEMORIAL (6,4km) |  MEDİPOL MEGA (6km) |  KÜLTÜR UNIVERSITY (3km) |  ALTINBAŞ UNIVERSITY (6km) |  SABAHATTİN ZAİM UNIVERSITY (3,8km) |

At the center of the transportation network...

With Venara Güneşli, far away is now very close. With the subway waiting for you just 1 minute walk away, or your private car, you can experience the spirit of the city, or you can easily reach Istanbul Airport and open up to the world.



Reach fast transportation quickly

Venara Güneşli is only 50 meters from Mimar Sinan Metro Station, integrated to Marmaray and Metrobus, as well as easy access to E-5, Tem and North Marmara Highway.



Open the doors to a safe life

Reach fast
transportation quickly
For us, your safety
comes first! For this
reason, while making
our project, the
latest earthquake
regulations have been
meticulously followed
with applications such
as ground survey,
bored pile, raft general
foundation.

Modern design



Strong and secure architecture





**Large social
living areas**





**Comfortable
and safe
living**



Investment value



Take part in life

Thanks to the shops and stores in the Venara Güneşli project, you can meet all your needs without leaving your home. You can also add color to your social life with restaurants and cafes.



Do not move away from your home for your business

Venara Güneşlin's meeting rooms will provide you with ample opportunities to work without leaving the comfort of your home.



Modern practical interiors

High ceilings

Pleasant and peaceful kitchens





**Wake up to
a better day**



**Best for those
you care about**



**Bright and
spacious apartments**



**Quality comfortable
designs**



**Your home, your most
enjoyable social living space**



**You will be free from all
fatigue and stress**





We did not forget the children





**Maintain your fitness
and health**





A delightful gazebo and impressive green spaces





**Secure parking
garage with electric
charging station**

QUALITY



PEACE...



SAFE...



HAPPINESS...



PRESTIGE...



VALUE...



SPORTS...



SHOPPING...



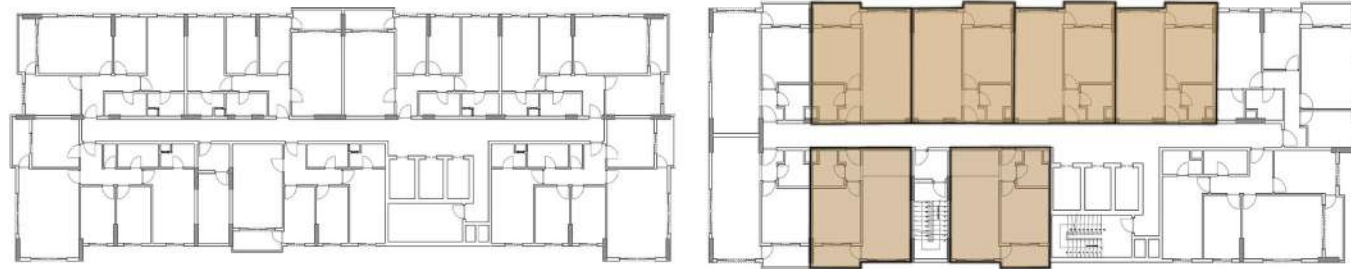
COMFORT...



**We have
brought
together
for you in
Venara
Güneşli...**

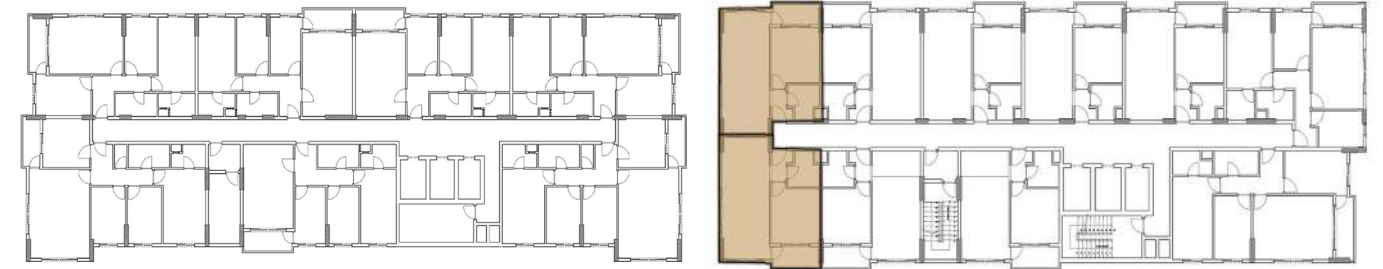
1+1 Type1

1+1 Type2



B Blok

A Blok



B Blok

A Blok

A Blok Type 1 1+1



Living Room + Kitchen: 23.58 m²
 Balcony : 4.17 m²
 Hallway : 2.47 m²
 Bathroom : 4.36 m²
 Bedroom : 12.39 m²

Net : 46.97 m²

Gross : 70.46 m²

A Blok Type 2 1+1



Living Room + Kitchen : 26.51 m²
 Balcony : 4.17 m²
 Hallway : 2.59 m²
 Bathroom : 4.19 m²
 Bedroom : 12.39 m²

Net : 49.85 m²

Gross : 74.78 m²

2+1 Type1



B Blok

A Blok

A Blok Type 1 2+1

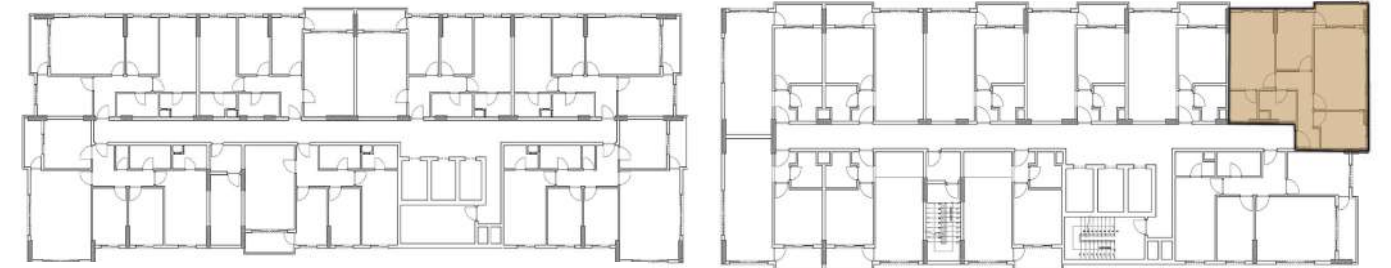


| | |
|-----------------|------------------------|
| Living Room | : 22.90 m ² |
| Kitchen | : 12.09 m ² |
| Balcony | : 4.80 m ² |
| Hallway | : 7.67 m ² |
| Bathroom | : 4.80 m ² |
| Room | : 10.56 m ² |
| Master Bedroom | : 15.63 m ² |
| Master Bathroom | : 3.81 m ² |

Net : 82.26 m²

Gross : 123.39 m²

2+1 Type2



B Blok

A Blok

A Blok Tip 2 2+1



| | |
|-----------------|------------------------|
| Living Room | : 19.29 m ² |
| Kitchen | : 7.98 m ² |
| Balcony | : 4.75 m ² |
| Hallway | : 7.61 m ² |
| Bathroom | : 4.44 m ² |
| Room | : 9.30 m ² |
| Master Bedroom | : 15.46 m ² |
| Master Bathroom | : 3.59 m ² |

Net : 72.42 m²

Gross : 108.63 m²

2+1 Type3



B Blok **Type 3** **2+1**



| | |
|-----------------|------------------------|
| Living Room | : 22.23 m ² |
| Kitchen | : 11.63 m ² |
| Balcony | : 4.86 m ² |
| Hallway | : 7.80 m ² |
| Bathroom | : 5.12 m ² |
| Room | : 9.42 m ² |
| Master Bedroom | : 15.20 m ² |
| Master Bathroom | : 4.04 m ² |

Net : 80.30 m²

Gross : 120.45 m²

2+1 Type4



B Blok **Type 4** **2+1**



| | |
|-----------------|------------------------|
| Living Room | : 22.36 m ² |
| Kitchen | : 9.31 m ² |
| Balcony | : 4.86 m ² |
| Hallway | : 7.84 m ² |
| Bathroom | : 5.12 m ² |
| Room | : 9.34 m ² |
| Master Bedroom | : 15.20 m ² |
| Master Bathroom | : 3.97 m ² |

Net : 78.00 m²

Gross : 117.00 m²

2+1 Type5



B Blok Type 5 2+1



- Living Room : 22.01 m²
- Kitchen : 9.36 m²
- Balcony : 4.82 m²
- Hallway : 7.84 m²
- Bathroom : 5.12 m²
- Room : 9.28 m²
- Master Bedroom : 14.83 m²
- Master Bathroom : 3.94 m²

Net : 77.20 m²

Gross: 115.80 m²

3+1 Type1



B Blok Type 1 3+1



- Living Room : 28.35 m²
- Kitchen : 12.12 m²
- Balcony : 4.21 m²
- Hallway : 8.17 m²
- WC : 1.60 m²
- Bathroom : 4.76 m²
- Room 1 : 10.34 m²
- Room 2 : 9.93 m²
- Master Bedroom : 17.35 m²
- Master Bathroom : 3.78 m²

Net: 100.61 m²

Gross: 151.00 m²

VENARA

GÜNEŞLİ

"Living is beautiful"

Tag;

Contractor Company: Inas Construction-Conoglu
Construction Partnership

Architectural Project: KDM Kent Düşleri Merkezi mimarlık müh.
geo.har.inş.taah.taah.san.tic.ltd.şti.

Static Project: KDM Kent Düşleri Merkezi Architecture,
Engineering, Geo, Har, Construction,
Construction, Construction, Construction, San.

Electrical Project: ADM Engineering architecture.construction
trade.ltd.co.

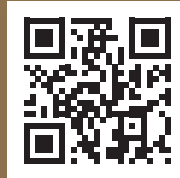
Mechanical Project: Akıncı Project and Engineering

Building Inspection: Sönmezer Building Inspection Ltd.Şti

VENARA

GÜNEŞLİ

“Living is beautiful”



Bağlar mah. Osmanpaşa Cad. No:56
Bağcılar / İstanbul

www.venaragunesli.com

info@venaragunesli.com

444 91 94